

The original
mechanical splicing systems.



Swagers - small range

TALURITTM

Small range swagers

All our small swagers are designed to achieve safe and efficient mechanical splicing. These swagers are easy to use and cope with many different swaging demands.

To come up to our customers' production requirements, all our small swagers can be equipped with different kind of power units affecting the cycle time.

The swagers are of open throat design and can be used either vertically or horizontally; bench mounted or free standing, offering total flexibility. They are available in 18, 75 and 150 ton capacities.

We use the very latest techniques in engineering to ensure our manufacturing processes are to the highest quality standard while maintaining cost effectiveness as well as highest possible safety level.

Range: 18 ton

Our 18 ton swager can be fitted with four different power units to operate the swagers.

How to operate...



Hand pump & Foot pump

Portable and easy to use the hand pump is a very economic alternative for small volumes.



Air hydraulic pump - foot controlled

Convenient to use since the operator has hands free. Hold function is integrated. Mainly for small volumes.



Electric portable pump

Portable and easy to use due to light weight. Just push a button to swage! Optional hold function!



Hydraulic unit

Perfect for serial work! All swagers can be fitted with hydraulic units. 1.5 kW is used for 18 ton swagers.



18 ton swager

The 18 ton swager is lightweight and easy to carry. This makes this swager excellent for field work.

Vertical, horizontal or mounted on stand

Designed to integrate in any production the 18 swager can be used vertically, horizontally or even up side down mounted on a height adjustable stand.



Range: 75 to 150 ton

The 75 and 150 ton swagers are the most powerful of the small swagers. Due to their swaging force hydraulic units are required. Hydraulic units up to 4,0 kW are relatively the same dimensionally, the 5.5kW unit is much larger in size. The larger the kW motor chosen the quicker the press will operate.

How to operate...

Hydraulic unit

Both the 75 and the 150 ton swagers can be equipped with 3,0 and 4,0 kW units. In addition the 150 ton swager can be fitted with the even more powerful 5,5 kW unit.

An electric foot pedal allows the operator to have both hands free during the swaging operation.

Hydraulic units are delivered with these useful features:

- **Hold position - Pedal**
When activated in the foot pedal the operator can pause the operation to adjust the wire rope assembly.
- **Automatic shut down - PLC**
Resource saving shut down, during a working pause. Easy to start again by pressing the foot pedal.
- **Stroke limiter - Timer**
Efficiency. Opening between dies can be reduced. With a small opening cycle time is shorter.
- **Automatic return - Electric manometer**
Time is saved efficiently! By performing an oil drop test to find the correct pressure and then setting the manometer, the swaging operation breaks once the ferrule is swaged and the piston returns automatically. The operator just presses down the pedal!
(For 5,5 kW units: ferrules from size 8.)



75 ton swager with hydraulic unit



150 ton swager with hydraulic unit

Special designs

When mounted on wagon these comparatively heavy swagers can become mobile and can be used in different workstations both indoor and outdoor.

A special swager is developed for the fishing industry and other net applications. This swager caters to the special requirements when space between fittings is limited. The picture shows the swager mounted on a trolley.



Hydraulic unit 1,5, 3,0 and 4,0 kW

Hydraulic unit 5,5 kW

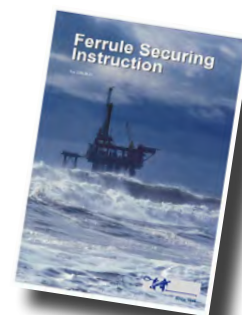


150 ton swager on trolley



150 ton swager for trawl makers

SWAGER	P 0018T 1P	P 0075T 1P	P 0150T 1P
Max. swaging force (kN)	180	750	1500
Type of die	A	B1	B1 / B2
Swaging capacity			
-Single stage (T)	6	12	16
-Multi stage (T)	8	16	20
Dimensions L*W*H (mm)	190x160x360	330x355x525	520x360x665
Weight (kg)	24	140	425

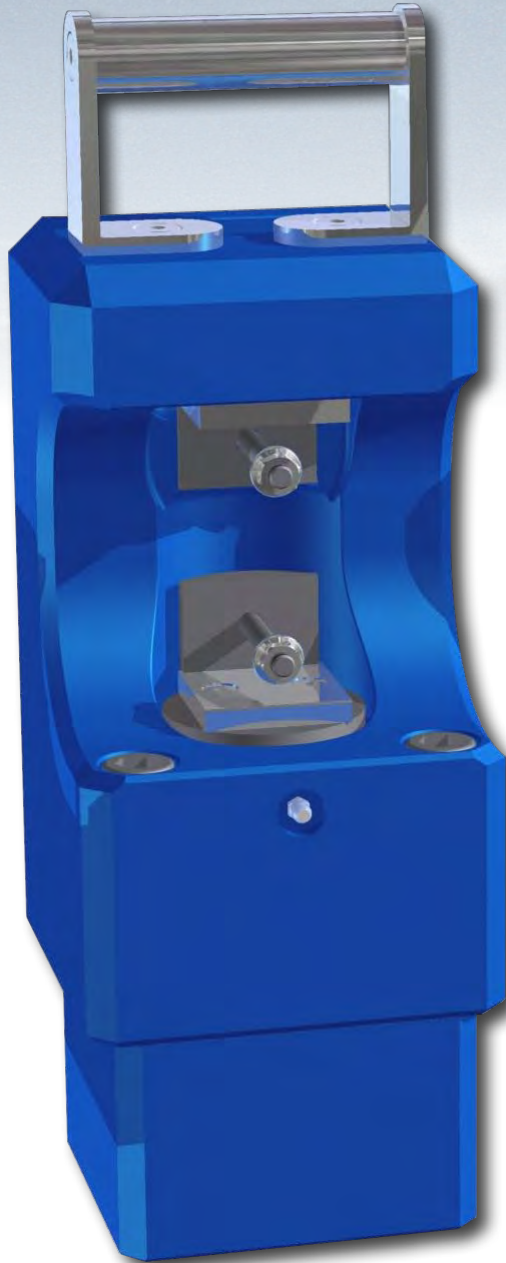


Always swage according to our
Ferrule Securing Instruction!

HYDRAULIC UNIT	HAGG EL 1,5	HAGG EL 3,0	HAGG EL 4,0	HAGG EL 5,5
Power (kW)	1,5	3,0	4,0	5,5
Rated current at 230/400 V (A)	5,7/3,5	11/6,6	14/8,3	22/12
Piston velocity approx. (mm/s)	18T: 7,0	75T: 3,5	75T: 5,5 150T: 2,8	- high pressure: 2,7 - low pressure: 10
Reservoir volume (l)	30	30	30	140
Dimensions L*W*H (mm)	650x420x580	640x420x650	640x420x690	905x600x870
Weight (kg)	81	91	105	275
Noise level (dB (A))	58	less than 70	less than 70	72

OTHER POWER UNITS (for 18T swagers)	Hand pump	Air hydraulic pump	Electric portable pump
	HAGG P23-18	HAGG PA6-18	
Force (kN)	180	180	180
Voltage or required air flow	-	3-8 bar 0,57 mm ³	110V (50 and 60 Hz) 230V (50 and 60 Hz)
Piston velocity approx. (mm/s)	-	1,3	1,6
Reservoir volume (l)	0,39	1,7	1,6
Dimensions L*W*H (mm)	L=360	241x127x197	400x135x140
Weight (kg)	5,4	6,3	8,7
Noise level (dB (A))	-	83	85

The original
mechanical splicing systems.



NEW!
A small handy
swager with
a lot of power!

**40 T
Swager**

TALURITTM

40 T 1-pillar Swager

The 40 ton swager has a single pillar open design and can be used either vertically, horizontally and upside down. Options such as a stabilizing plate or a tilted adjustable stand are available. The 40 ton swager offers total flexibility and is easy to use in the field due to its light weight and easy operation.



It has the capacity to press T-ferrules up to size No. 9 in single stage swaging, and T-ferrules up to size No. 13 in multi stage swaging. The swager can be used with A and A1 dies. All dies are manufactured from hardened and tempered die steel for a long service life, durability and excellent swaging results.

Hydraulic units



Basic Hydraulic Unit
(HAGG 1,5/700-X-V1)



Multifunctional Hydraulic Unit
(HAGG 1,5/700-X-V2)



Hydraulic Hand pump
(HAGG P59L-40)

The swager can be fitted with two different models of electrical hydraulic units. The basic electrical hydraulic unit (HAGG 1,5/700-X-V1) comes with the standard up/down function. Whereas the multifunctional electrical hydraulic unit (HAGG 1,5/700-X-V2) comes with both up/down function and "hold position" to facilitate rope/eye adjustment and to make tool set-up quicker. To minimize cycle time when pressing, the HAGG 1,5/700-X-V2 is also equipped with a stroke limiter that allows control of the retraction stroke length of the piston when operating the swager.

Both hydraulic units are operated by an electrical foot pedal, allowing the operator to use both hands when swaging. Pressure is set by a pressure valve. When the swager is left unused, the automatic shutdown feature will turn the swager off. The swager is easily restarted by pressing the electrical foot pedal.

The new 40 ton swager can also be fitted with a manual hydraulic unit, P59L-40, for operating the swager. All hydraulic hoses come with quick couplings.

MA 800 - Pressure Gauge

MA 800 pressure gauge can also be fitted to the swager. By setting the required pressure on MA 800, the piston returns automatically once the preset pressure is reached. This saves time and unnecessary movements for the operator.



One swager - several options

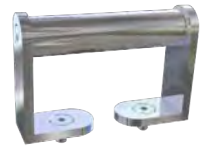
STANDARD SWAGER

The standard swager is delivered without any additional accessories. The swager has a built-in grip and two mounting holes on both top and bottom. This means it can be fixed on a table, in one of the two upright positions. It can also be operated in a horizontal position. The standard swager is customized to operate two different sizes of dies. In addition it has two hydraulic connections depending on the wanted operational position.



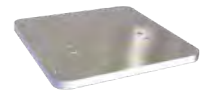
HANDLE

The swager can be delivered with a handle for easy transportation of the swager. When using the swager in an upright position without fixating the swager, it is recommended to use it together with the stabilizing plate.



STABILIZING PLATE

We highly recommend to use the stabilizing plate when operating the swager without fixation. The stabilizing plate can be combined with the adjustable stand or together with the handle.



ADJUSTABLE STAND

To get an easier and more ergonomical position when operating the swager it is recommended to use the adjustable stand. It is especially well suited for operating the swager upside down, which means you can keep your hands in a fixed position during the operation. The stand can be fastened on a table or used together with the stabilizing plate.



FIXED LEGS FOR HYDRAULIC UNIT

The fixed legs are customized for the existing fixing holes in the plate for the hydraulic unit. The legs enables the operator to place the electrical hydraulic unit in an ergonomically correct position and facilitates the adjusting of the hydraulic pressure for the swager.



DIES

The 40 T swager can be fitted with two types of dies: Type A and type A1. With type A it is possible to swage ferrules up to size 8 in single stage and up to size 10 in multi-stage. With type A1 it is possible to swage ferrules up to size 9 in single stage and up to size 13 in multi-stage.



Dimensions: A = 38 x 42 mm (Height x Width) Length is variable.
A1 = 38 x 50 mm (Height x Width) Length is variable.

SWAGER

TECHNICAL DATA

Art No: P0040T 1P	Value		Unit
Max. Swaging force	400		kN
Max. oil pressure	700		bar
Length of stroke	22		mm
Dimensions (L x W x H)	146 x 146 x 340		mm
Weight	37		kg
TYPE OF DIES:			
	A (38x42)	A1 (38x50)	-
- Capacity single stage	9 (T-ferrule)	8 (T-ferrule)	-
- Capacity multi stage	13 (T-ferrule)	10 (T-ferrule)	-
OPTIONS:			
Handle	Art No: 40T HANDLE		-
Stabilizing plate	Art No: 40T STAB PLATE		-
Adjustable stand	Art No: 40T ADJ STAND		-
MA 800 - Pressure Gauge	Art No: MA 800		-

HYDRAULIC UNITS

TECHNICAL DATA

Art No: HAGG 1,5/700-(1-5)			V1	V2	Value	Unit
Power supply and Nominal current at:	1	3x 220-240/380-415V (50 Hz)	✓	✓	6,1/3,5	A
	2	3x 250-280/440-480V (60 Hz)	✓	✓	6,2/3,6	A
	3	3x 190-200V (50 Hz)	✓	✓	7,2	A
	4	3x 360-415V (60 Hz)	✓	✓	3,6	A
	5	3x 200-250V (60 Hz)	✓	✓	7,2	A
Power			✓	✓	1,5	kW
Cycle time (Single stage, full stroke)			✓	✓	8	s
Reservoir volume			✓	✓	3,7	l
Inlet/Outlet threads on couplings			✓	✓	1/4	inch
Noise level			✓	✓	65	dB (A)
Dimensions (L x W x H)			✓	✓	650 x 215 x 310	mm
Weight			✓	✓	42,5	kg
Foot pedal			✓	✓	-	-
Hold position			na	✓	-	-
Stroke limiter			na	✓	-	-

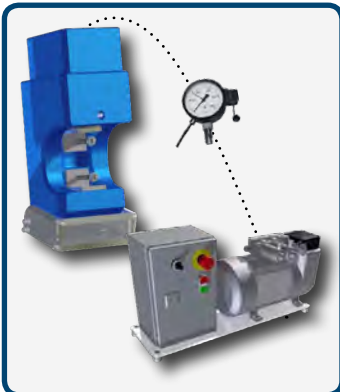
There are three general solutions which cover the most common types of use. The swager can also be customized depending on use if none of the solutions below apply to your swaging needs. (See options list or contact Talurit AB or your nearest distributor for more information.)



A. FIELD SWAGER

The field swager is customized for field work and offers total mobility. It can be operated both horizontally and vertically. It includes the following:

- Handle for easy lifting.
- Stabilizing plate.
- Hand pump P59L-40 which is operated by pushing the handle manually, also comes with a 800 mm hose with quick coupling for easy connection.



B. INDUSTRIAL SWAGER

The industrial swager is customized for operation in an industrial environment. Especially suited for serial production. It includes the following:

- Adjustable stand
- MA 800 - Pressure gauge
- Multifunctional Hydraulic unit: HAGG 1,5/700-X-V2 comes with a 2000 mm hose with quick coupling for easy connection.

The Multifunctional Hydraulic unit is operated with an electric foot pedal equipped with "hold position" to facilitate rope/eye adjustment and to make tool set-up quicker. To minimize cycle time when pressing, the HAGG 1,5/700-X-V2 is also equipped with a stroke limiter that controls the retraction stroke length of the piston.



C. MULTI SWAGER

The multi swager is customized for use in both industrial environments and field work. It includes the following:

- Handle
- Adjustable stand
- MA 800 - Pressure gauge
- Stabilizing plate
- Hand pump P59L-40
- Basic Hydraulic unit: HAGG 1,5/700-X-V1, also comes with a 2000 mm hose with quick coupling for easy connection.

The Basic Hydraulic unit is operated by an electrical foot pedal with a standard up/down function.


Talurit AB

Amalia Jönssons gata 29
421 31 Västra Frölunda
SWEDEN

Phone: +46 31 709 30 80
Service: +46 31 709 30 93
Fax: +46 31 47 10 71
E-mail: info@talurit.se
Website: www.talurit.com


Talurit (UK) Ltd

Unit 4 Shortwood Court
Shortwood Business Park
Hoyland Barnsley
South Yorkshire
ENGLAND S74 9LH

Phone: +44 1226 369960
Fax: +44 1226 361862
E-mail: sales@talurit.co.uk
Website: www.talurit.com


Gerro GmbH

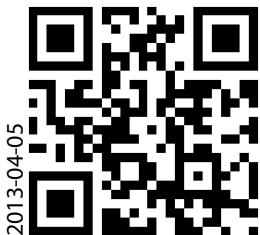
Carl-Benz-Strasse 1
78244 Gottmadingen
GERMANY

Phone: +49 7731 97030
Fax: +49 7731 970317
E-mail: info@gerro.de
Website: www.gerro.com


Talurit Machinery (Ningbo) Co., Ltd

No. 982 Mingzhou Road, Beilun
Ningbo 315800, Zhejiang
CHINA

Phone: +86 (574) 86308590
Fax: +86 (574) 86308591
E-mail: vanilla.chen@talurit.cn
Website: www.talurit.cn



2013-04-05

Scan this QR Code with your smart device to visit our website.